

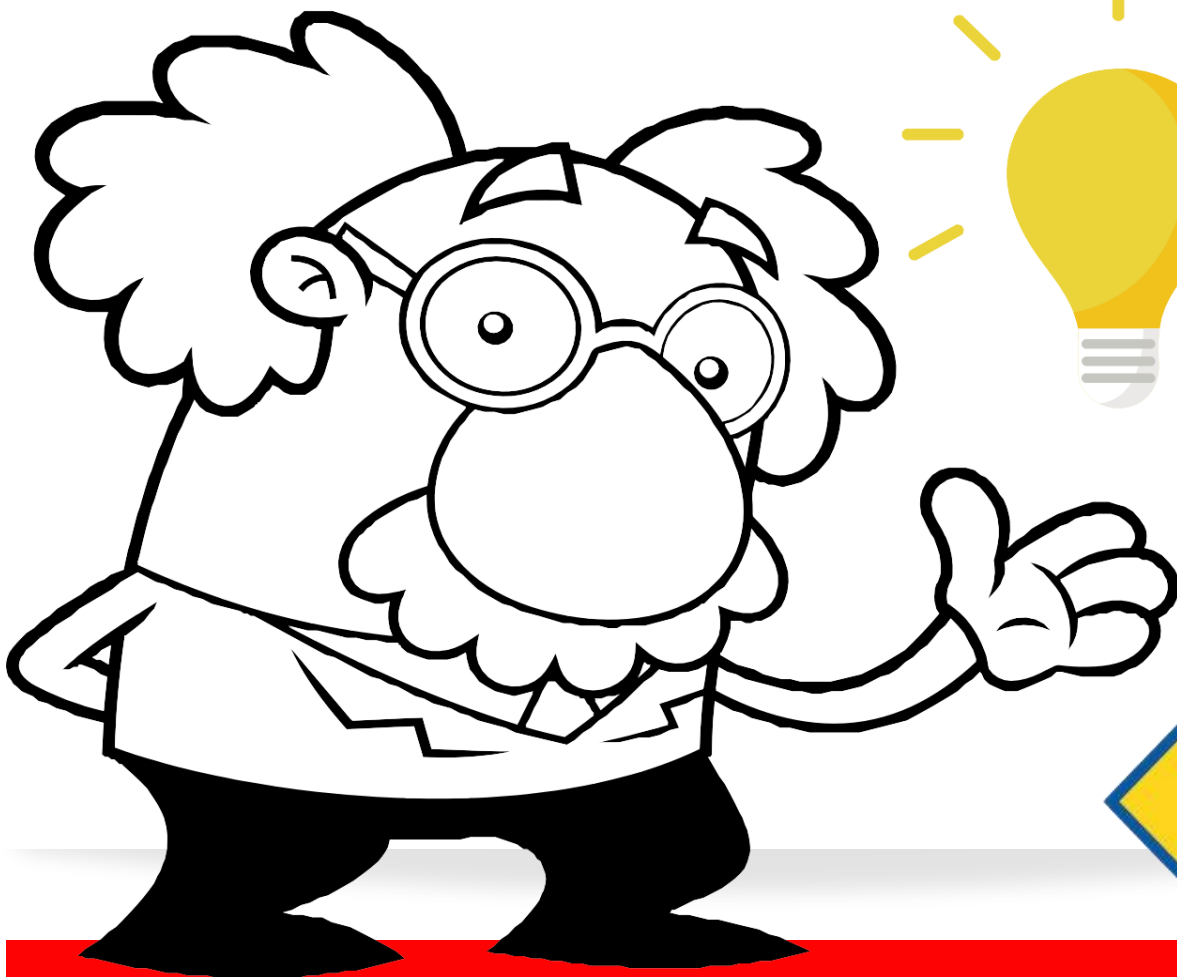


**Scouting  
America**

**Southeast Louisiana Council**

# INVENTION CONVENTION

**Cub Scout Day Camp  
Guidebook  
2025**



# Table of Contents

|                                     |    |
|-------------------------------------|----|
| Letter to Parents & Pack Leaders    | 3  |
| What is Day Camp?                   | 4  |
| Who is Day Camp For?                | 4  |
| Weeklong vs Day Camp in a Day       | 5  |
| What Will My Child Do at Day Camp?  | 6  |
| Advancement At Camp                 | 7  |
| Requirements to Attend Day Camp     | 7  |
| Where and When is Day Camp Held?    | 8  |
| Fees & Deadlines - READ CAREFULLY   | 9  |
| Refund Policy                       | 10 |
| Pack Day Camp Coordinator           | 10 |
| Transportation                      | 11 |
| How Can I Help?                     | 12 |
| Camp Staff                          | 13 |
| Den Walkers                         | 14 |
| What to Bring                       | 15 |
| What NOT to Bring!!!                | 16 |
| Other Requirements                  | 16 |
| Cell Phones                         | 16 |
| Medication                          | 16 |
| Special Needs                       | 17 |
| Uniforms in Camp                    | 17 |
| Communicable Disease Protocols      | 17 |
| Emergency Procedures                | 18 |
| General Registration Process        | 19 |
| Lost & Found                        | 20 |
| Dragon Scouts (Aka Tot Lot)         | 20 |
| Pre-Camp Parent Orientation Meeting | 21 |
| Camp Activities                     | 21 |
| Camp Director Contact Information   | 22 |
| Conclusion                          | 22 |

# Welcome Letter to Pack Leaders & Parents

Hello and welcome to Cub Scout Day Camp. This guide has been prepared to help you feel confident about the Day Camp Program and Staff and to answer many of your questions by providing useful information. Whether you are new to Cub Scout Day Camp or a camp veteran, it is important to read the entire guide as it contains new information and answers many of your questions and concerns.

Cub Scout Day camp is planned and conducted by volunteers, without the assistance of parents, camp would not occur. Each den of 8 to 10 scouts will need 2 adults to supervise them each day. Each program activity such as Range & Target sports, games or crafts needs additional adults and/or Scout BSA to staff it. We need your help to make camp a success!

By volunteering at Cub Scout Day Camp, you help provide a great camp experience for the Cub Scouts. As Camp Directors, we know from personal experience how much the children enjoy and appreciate your involvement. Oh, did we forget to mention – volunteering at Cub Scout Day Camp is a lot of FUN!

Begin your plans and preparations for a great day camp experience. Our pledge is to make this a memorable experience for you and your Cub!

We look forward to seeing you soon!

Tia Lopez  
Bayou Area

Althea Vallotton & Charlene Saravia  
New Orleans Area

Erica Knauer  
Slidell Area

# CUB SCOUT DAY CAMP



# What is Day Camp?

Cub Scout Day Camp is up to a 5-day outdoor experience under the supervision of specially trained volunteers. The Camp Director and the Camp Program Director have attended the Scouting America National Camping School and have completed certification standards set forth by the Scouting America National office. Additionally, the BB gun and Archery range officers receive Cub Scout Range & Target Activities training and certification.

The Southeast Louisiana Council takes pride in assuring that our Day Camp meets the requirements for national accreditation. The National Standards are established to ensure the health and safety of every camper, leader, staff, and visitor while at camp and to ensure that every Cub Scout will have a high quality, fun filled, Cub Scout Day Camp experience.

## Cub Scout Day Camp

- Encourages participation so that Cub Scouts benefit and grow with a good outdoor experience.
- Teaches skills that Cubs will carry throughout their Scouting career and beyond
- Introduces Cubs to other Scouts and Leaders from around Council
- Helps instill values and character they will need to become better citizens, leaders and members of the community.
- Assists in the recruiting and inspiration of future Cub Scout Leaders and helps strengthen den and Pack organization.
- Provides a continuation of the Cub Scout program through the summer and assists the Pack in qualifying for the Summertime Fun Adventures.
- Provides the Scout with an opportunity to begin work towards their next rank in Cub Scouting.

This year, we are offering two versions of Cub Scout Day Camp:

New Orleans Area Day Camp – Will offer a full week of programming. Scouts will be dropped off in the morning and picked up in the afternoon.

Slidell & Bayou Areas - Day Camp in a Day – These districts will offer a day camp in a day option. Scouts will participate for one full day in a variety of Cub Scout Day camp activities.

# Who is Cub Scout Day Camp for?

Camp is open to children who have completed kindergarten through those going into the fifth grade that are registered with Scouting America. If your child is not yet signed up for Cub Scouts, they must join before attending camp.

The Cubs may or may not be in mixed rank groups based on registration numbers. However, our program areas are geared to the different Rank levels. For example, Webelos will be working on more advanced projects than the Wolves.



# Weeklong vs Day Camp in a Day



## Weeklong

- ✓ Cubs attend every day from approximately 8 a.m. to 3
- ✓ Cubs get to participate in more activities and work on more Rank electives.
- ✓ An Adult must volunteer for at least one day during the week to help supervise the Den's at camp.
- ✓ Tiger Cubs must have an adult partner with them every day they attend.
- ✓ Cubs have an entire week to make new friends and get a start on their new Rank electives.



## Day Camp in a Day

- ✓ Cubs attend for only one day - Saturday.
- ✓ Cubs participate in fun activities and work on some of their Rank electives.
- ✓ An Adult must accompany the Cub to camp. However, one adult can supervise several Cubs
- ✓ Tiger Cubs must each have an adult partner with them.
- ✓ Even though it is just one day, Cubs can make friends from other units.

### Can my Cub attend both styles of Cub Scout Day Camp?

- Yes, your Cub may attend any and all of the day camps. Choose the camp(s) that are right for your Cub.

### Will my Cub do the same thing at all the Day Camps if they attend more than one?

- No, each camp is designed with different activities. Occasionally there will be a crossover activity, but your Cub will still have fun doing the activity with different Cubs and staffers.

### If I register my Cub for one of the camps, can they attend all of the camps, or do I have to register for each one?

- You must register your Cub for each Camp separately



# What Will My Child Do at Day Camp?



Each day, Cub Scout Day Camp starts with an opening ceremony and announcements and concludes with a closing ceremony. See specific camps for schedule. More information is provided later in this guide.



The daily program contains a well-balanced variety of activities. These include physical activities, time for rest, quiet time, times for noise and motion, learning new skills and making new friends. The exact program will vary from camp to camp, but will most likely include some of the following:

- Range & Target Activities (BB Guns, Archery & Sling Shots)
- Sports and/or Games
- Special Webelos Activities
- Nature
- Crafts
- Skits & Songs
- And much more....



# Advancement at Camp

While at camp, the Scouts will complete some of the requirements and electives in their new Rank handbooks. Advancement awards are not presented at camp. The camp directors, with the help of the Den Walkers will keep a record sheet for each Scout and record daily what achievements, electives or activity badges they complete. After the end of camp, all adventures completed at camp will be forwarded to the Cubmasters for the Packs in attendance by the beginning of July. There will be a complete breakdown of Tigers, Wolves, Bears, Webelos, & Arrow of Light. This will enable Packs to transfer the information to Scouts own handbooks and Scout Book (or other record keeping software) and present the awards at their next meeting.

Remember, Scouts will be working on their new Rank electives and not their previous Ranks.

## Requirements to Attend

### Must be Registered with BSA

We cannot accommodate unregistered friends or siblings.



### Mandatory Pre-Camp Meeting

New Orleans Area Cub Day Camp requires parents to attend a Pre-Camp Meeting

### Entering 1st - 5th Grade

Must have completed Kindergarten but cannot have finished 5th grade.

1-5



### Tiger Adult Partners

An Adult over the age of 21 must attend every day of camp with a Tiger Scout (1st grader)

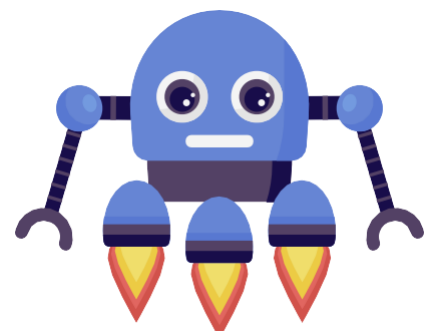
### Register in Advance for Camp

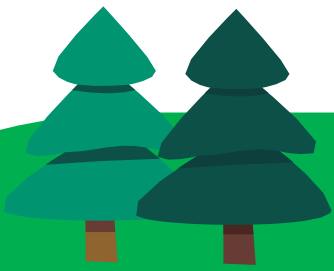
There will be no registrations accepted weeks before your camp or at the door.



### Volunteer Adults for Wolves-AOLs

Parent or guardian of Wolves - AOL Scouts must attend at least one day of camp. Grandparents or other adults may fill in with parents' permission & YPT Training.

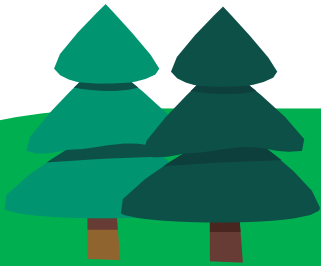




## Bayou Area Day Camp in a Day

Saturday, July 26, 2025

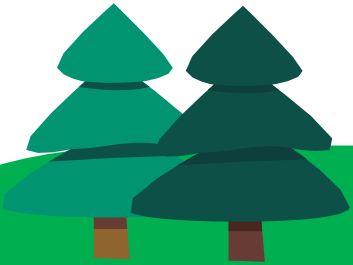
St. Louis Catholic  
Church 2266 Bayou  
Blue Road Houma, LA  
70364



## Slidell Area Day Camp in a Day

Saturday, June 7, 2025

Camp Villere - Armory  
Building 34845 Grantham  
College Drive Slidell, LA  
7046



## New Orleans Area Day Camp

May 26 - 30, 2025

Christ the King Lutheran  
Church 1001 West  
Esplanade Avenue Kenner,  
LA 70065

Register today at [bsa-selacouncil.org](https://bsa-selacouncil.org)



# Fees & Deadlines - Read Carefully

Cub Scouts are considered registered for camp when registration has been completed online and fees are paid in full on or before the deadline dates listed below.

## **New Orleans Area Full Week**

\$100 - Early Bird  
Camp t-shirt guaranteed to  
be available at the start of  
camp.

\$120 - Registration

\$18 - Per Extra t-shirt

Registration Deadlines

Early Bird Ends:

April 27, 2025

Registration Ends:

May 11, 2025

## **Slidell & Bayou Areas Day Camp in a Day**

\$30 - Early Bird (registering  
Camp t-shirt guaranteed to be  
available at the start of camp.

\$35 - Registration

\$18 - Per Extra t-shirt

Registration Deadlines

### **Bayou**

Early Bird Ends:

June 29, 2025

Registration Ends:

July 13, 2025

### **Cypress**

Early Bird Ends:

May 4, 2025

Registration Ends:

May 28, 2025

## Fees Continued...

Camp fees include one (1) camp t-shirt, patch, and all camp activity supplies.

Packs who register new Scouts after early bird deadline may register them at the early bird fee instead of paying the late fee. Please contact the council office to make the adjustments.

Registration will close two weeks prior to camp. Scouts who have joined Scouting America after the close of registration may still register through the Council offices. Additional registration after the registration closes is at the discretion of the camp Directors and Council Office.

**WE ARE UNABLE TO REGISTER AT THE DOOR AT DAY CAMP!**

Registrations must be done online via the council calendar at [bsa-selacouncil.org](http://bsa-selacouncil.org).

Registration can be done by individual parents or by the pack. Please connect with your Pack leadership to avoid duplicate registration.

## Refund Policy

Because materials must be ordered/purchased well in advance, a nonrefundable fee of \$55.00 (full week) and \$17 (Day Camp in a Day) per Cub Scout will be assessed on all refunds.

Requests for refunds must be submitted via email to Nancy Allen at [nancy.allen@scouting.org](mailto:nancy.allen@scouting.org) no later than 10 days prior to the start of camp. In the cases of family emergencies, illness, or summer school attendance, submit an email to your Camp Director and Council office for consideration. No requests will be accepted after ten (10) days following the last day of Day Camp.

Fees can be transferred to another Scout if requested by the Friday before camp begins. You must contact both the Council office AND your Camp Director to transfer fees to another youth. (Contact information at the end of guidebook).



# Pack Day Camp Coordinator

If many cubs from one pack are attending, it is recommended that the Pack assign a Pack Day Camp Coordinator. This is a leader or parent who is responsible for seeing that every Scout in the Pack receives information to register for Cub Scout Day Camp and helps ensure that all that wish to attend are registered.

## Pack day camp coordinators:

- Distribute the Cub Scout Day Camp Guidebook, parent information brochure, and registration information to your Pack's families. Each parent should have a copy of the guidebook, parent information brochure or know how to access them on the council website.
- Help collect registration information and payments.
- Process registration online for the Pack.
- Help to recruit and schedule Den Walkers (Parent volunteers) for each day and den level and register them online\*.
- Encourage all parent volunteers and Den Walkers to complete YPT training online at [my.scouting.org](http://my.scouting.org)
- Collect all Annual Health & Medical forms for Scouts and Den Walkers in advance of Cub Scout Day Camp and ensure that they are provided to Day Camp Director at the Parent Orientation Meeting or by the first day of camp.
  - Please make sure that parents include those individuals that are allowed or not allowed to pick up their Scouts from Cub Scout Day Camp.
- Make sure that all parents are aware of the date and time of the Cub Scout Day Camp Orientation meeting (New Orleans Area camp ONLY).

The Cub Scout Day Camp Guidebook is available on the council website or can be emailed to you upon request.

\*The Camp Director will use the Den Walker registration to assure that there is enough supervision for each Cub Scout Day Camp Den. Den Walkers can be parents, grandparents, guardians, or any other individual who is 21 or older. If Den Walker is not a parent or guardian, they must complete YPT. Remember that Cub Scouting is a family activity, so get those parents involved.



# Transportation

Transportation to and from camp is the Scout parent's responsibility. Check with your Pack Day Camp Coordinator for ride sharing opportunities. Please make sure that if you are not driving your Scout to and from Cub Scout Day Camp, that you have designated what other individual may or may not take your Scout on your Annual Health & Medical Form

## How Can I Help?

Yes, WE NEED YOUR HELP!! Depending on size, Cub Scout Day Camp can have between 15 – 50 Staff Volunteer positions to fill each year that must be filled by parents, leaders, or Scouts BSA/Venturers/Explorer Scouts/Sea Scout. Anyone with an open week, day, or even a few hours, can volunteer to create a memorable experience!

### What can I do?

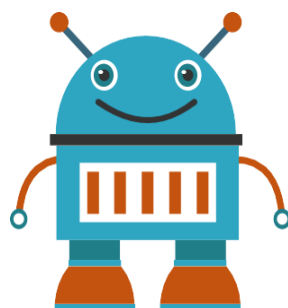
- Help with check-in and check-out each day.
- Help with activity areas.
- Act as health officer.
- Work the range and target activities
- Help with special programs

### Volunteers will need to:

- Arrive 30-45 minutes before the start of camp so that you may be briefed on your responsibilities.
- Expected to follow the Day Camp Staff policies.
- Wear comfortable clothing, but no halter-tops or similar abbreviated clothing.
- Smoking/Vaping is prohibited around the Cubs during Day Camp.

If you have any special skills that appeal to Cub Scouts or access to supplies that might be useful to the Day Camp operation, contact your Camp Director or send an email to [selacubcamping@gmail.com](mailto:selacubcamping@gmail.com). The more help we have, the better the program we can offer our Scouts.

All Staff Volunteers (working in program areas) need to register online at [bsa-selacouncil.org](https://bsa-selacouncil.org). When registering, don't forget to check the box on the Adult Volunteer/Staff forms to indicate your area of interest. Please let the Camp Director know what area you are interested in helping with and they will try to accommodate you.



# Camp Staff

If you would like to experience the fun of working with Cub Scouts at Day Camp in a program area, we have a place for you. We need fun-loving adults who can spend time at camp. There is no fee for staff members. All staff must be registered with the Scouting America. Please go to [bsa-selacouncil.org](http://bsa-selacouncil.org) to register

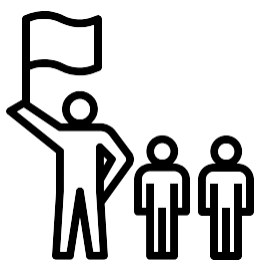
Scouts BSA/Venturers/Sea Scouts/Explorer Scouts, age 14 and older, may volunteer as a Day Camp Den Chief or as a Program Aide. Volunteering at Day Camp offers youth an opportunity to use leadership skills, pass on useful information and encourage younger scouts to continue in Scouting. Youth will gain service hours to use toward their rank advancement or even school requirements (Day Camp Directors will sign service hour forms that are provided by the volunteer). These older Scout's positive influence on our Cub Scouts helps to build our Scouting program.



Scouts BSA under the age of 14, may volunteer at Day Camp, but will be assigned to an adult partner to help. This provides the adult with an extra set of hands and gives the Youth Camp Staff an opportunity to work on their leadership and mentoring skills.

Staff members and Scouts BSA/Venturers/Sea Scouts/Explorer Scouts must complete Youth Protection Training and are encouraged to complete First Aid and CPR training as well. Scouts who volunteer to work 3 or more days will receive a Day Camp Staff t-shirt.





## Den Walkers

A Den Walker is an adult that helps supervise the den during Cub Scout Day camp. They ensure that the Scouts move from activity to activity in a timely fashion, listen to instructions when warranted, DO THEIR BEST at each activity, keep the peace between Scouts, make sure Scouts are following the rules to keep them safe, and be another pair of eyes at camp to help keep staff informed of potential problems. Den Walkers help ensure that our camp runs effectively and provides fun and enjoyment for all our campers.

Each Pack needs to provide den walkers based on the following for EACH DAY of the camp:

- One den walker for 1-5 Scouts - *per rank level*
- Two den walkers for 6-10 Scouts - *per rank level*
- Three den walkers for 11-15 Scouts - *per rank level*

Packs may provide different Den Walkers each day, Annual Health & Medical forms (Part A and B) **WILL BE REQUIRED** for each volunteer. ***Tiger Cubs must have a Tiger Adult Partner with them when they attend day camp. Tiger Adult Partners act as Den Walkers and must complete the Annual Health & Medical Form!*** Click on link to access form - [Annual Health & Medical Form](#).

We understand that finding parents who are available to be Den Walkers can be difficult. We must have the appropriate number of adults in each den to meet BSA adult/youth ratios. If you are unable to meet the requirements above for each day, please contact the day camp directors **BEFORE** day camp week so that we can try to help you or your Pack.

Den Walkers should register online at [bsa-selacouncil.org](http://bsa-selacouncil.org). Den Walkers can be registered at the same time as scouts by the Pack coordinator or they can register themselves.

We also encourage all parents who sign up to be Den Walkers to go to [my.scouting.org](http://my.scouting.org) and take Youth Protection Training, please attach a copy of the completion certificate to your Annual Health & Medical Form.

Your Scouts may be combined with Scouts from other Packs to form larger groups to move as a den through camp. Please work together with the other adults as you move through the rotations and do not exclude or ignore Scouts that are not from your Pack. The entire group of Scouts in the Den are your responsibility each day, not just the Scouts from your Pack. As a Den Walker, please take an active role in the sessions to help the staff members and Scouts. The Activity Leaders do not know your Scouts as well as you do and will need your help with their names, attention, and enhancing their enjoyment. Thank you for taking time to be here! Without your help Cub Scout Day Camp would not be possible!

If you have any concerns, questions or would like to be on staff next year, please contact one of our Day Camp Directors or SELA Council Staff. (See Contact Information at the end of the Guidebook)



# What to Bring

Camp shirts will be handed out at the Cub Scout Day Camp Parent Orientation meeting (New Orleans Area camp only) or on the first day (Day Camp in a Day). This shirt helps the camp staff identify the Scouts and the dens they are assigned to as well as people who are not permitted to be in camp. When ordering camp shirts, we recommend that if you have any questions concerning the size of the shirt, you order the next size up from what your child is currently wearing. We will not be able to exchange shirts at camp for a different size. You may also want to order an extra shirt so that you do not have to wash it every day. The Cub Scout Day Camp shirt is the official uniform of day camp and intended to be worn every day to camp. Additional shirts are \$18 each and can be purchased when you register your cub.

Please remember this is an outdoor camp. Your Scout should wear proper footwear, such as gym shoes or hiking boots, with socks. **ABSOLUTELY NO OPEN TOED SANDALS, SLIDES, CROCS, OR FLIP FLOPS WILL BE PERMITTED.** You will be called to bring different shoes if your Scout shows up in one of these types of footwear and they will not be permitted to participate at all until proper shoes arrive. This shoe rule applies to adults in attendance as well.

Please label EVERYTHING with the Scout's name & pack #.

Scouts should bring the following items EACH DAY:

- Cub Scout Day Camp T-Shirt (wear an extra shirt on first day– Pack shirt or Scouting shirt if possible if you have not received your Day Camp t-shirt).
- Hat, cap, or other head protection (it gets very hot, hats provide shade and sun protection for the body as well as protect you from sunburn)
- Sunscreen & Insect Repellant
- Water Bottle (water refill stations will be available)
- Sack lunch
- Rain Gear (as weather requires)
- Gym shoes or hiking boots (no open toed shoes/Crocs allowed). This rule applies to all Scouts and adults in attendance.

Water activities may or may not be offered at every camp. If they are offered at your camp session, it is recommended scouts wear their swim trunks to camp on water days versus changing at camp. Swimsuits may only be necessary on certain days. See your specific parent brochure and attend Orientation meeting for more specific information.

## What Not to Bring



- Pocket Knife Matches
- Portable music devices
- Handheld video games
- Any other electronic device

Cell phones are not permitted to be used at camp. Please keep at home, if it must come to camp, please have it labeled, turned off, and secured with cub's belongings

## Other Requirements...

Some activities may require Scouts to bring additional items not listed on the above "What to Bring to Camp" list. If other items are required, you will be notified the week before the start of camp at the Orientation meeting or by the Camp Director so that you will have time to procure those items.

## Cell Phones

While at camp, we understand that many adults will have cell phones. However, please limit your usage to break periods as much as possible. Supervising Scouts is the primary focus as a volunteer and if you are on your phone, you are not supervising the scouts! Please do not let the Scouts in your Den use your cell phone to play games, etc. If they have downtime, encourage them to practice scouting skills, make a new friend, play a game, socialize, etc. We encourage Scouts to leave their cell phones at home. We want their focus to be on the activities at camp and not on their phone. A scout is Trustworthy, but we cannot guarantee the security of phones. Cub Scout Day Camp is not responsible for phones that are lost, damaged, stolen, etc. It would be better for all for it to be left at home.

## Medication

If your child requires medication during camp hours, only the parent, guardian or the attending adult who has been given permission by the parent, may dispense the medication. **No medication (this includes over-the-counter meds) may be given by the Day Camp Staff, including the Health Officer.** Medications shall only be carried by an adult (over 21). Exceptions to this are for those individuals who need to always carry emergency medication such as asthma inhalers, Epi-Pens or similar prescribed bee sting kits, Diabetes kits, nitroglycerin tablets, etc. Any medications brought to camp must be in the original pharmacy or manufacturer's container with the patient's name, medication name clearly labeled with dosage instructions. List all medications on the Annual Health and Medical Record.

## Special Needs

Please contact your Day Camp Director in advance if your Scout has special needs. Scouting America promotes the inclusion of youth with disabilities and/or special needs. We recognize that each child is unique, and no single plan will work for every scout. We will work together to provide an enjoyable Day Camp experience for your Scout.

## Uniforms at Camp

All Cub Scouts, Den Chiefs and Camp Staff are required to wear this year's Day Camp t-shirt every day. These shirts let us know, at a glance, if the wearer is a Cub Scout, an Adult Volunteer or a Staff Member. We can spot visitors or strangers in camp immediately. For this reason, it is imperative that your Cub Scout wear the Day Camp t-shirt each day.

Additional t-shirts are available for \$18 each purchased with your registration. We recommend getting 1 or 2 additional shirts for weeklong camp. Remember, t-shirts must be ordered by the early bird deadline of April 27 (New Orleans Area), June 29 (Bayou Area) or May 4 (Slidell Area) to guarantee availability at camp.

Your Scout may wear their bathing suit to camp on water days so that they only have to remove their t-shirt or outer clothing when it is time for water activities.

## Communicable Disease Protocols

The Southeast Louisiana Council follows the recommendation of the CDC and State regarding communicable diseases. Day Camp will follow these protocols and procedures. If your Scout is showing any of the following symptoms, please keep them home from camp for the day if not the rest of week depending on symptoms:

- Fever
- Coughing
- Sore Throat
- Pink Eye symptoms
- Vomiting or Diarrhea

Please notify the Directors if your child is going to be absent due to illness. If you have any questions or concerns about these procedures, please contact the Day Camp Director or Council Office to discuss.

# Emergency Procedures

## Emergencies

The camp maintains a list of people certified in CPR and basic First Aid procedures. A Camp Health Officer is always at camp. In case of an emergency or accident involving your child, you will be notified by the Camp Director. We request that you add any information to the Annual Health and Medical Record form that we may need in case of an emergency. Please notify us if there are any changes or additions to this information prior to camp. If you have an emergency and need to get in touch with your child is at camp, please call the Camp Director or the Southeast Louisiana Council office at 504-889-0388

## Inclement Weather

We hold Cub Scout Day Camp rain or shine. In the event of a weather emergency, the Day Camp Director will institute the Emergency Procedures as found in the Day Camp Staff Manual and Emergency Procedures Manual. The Day Camp Director will signal an emergency procedure has been implemented. At that time, each den and all staff will proceed to the designated meeting place for instructions unless otherwise specified by your specific area Day Camp.

Weather is monitored closely throughout the week by Day Camp Administration. In the event of lightning strikes or severe thunderstorms, proceed to the nearest enclosed Shelter or other assigned location and wait for Camp Administration instructions.

If inclement weather moves in during Day Camp hours and we are unable to resume activities, your Pack's Den Walkers will assist in contacting parents and the transportation of the youth in the pack to the designated pick-up site. In the event we must evacuate the Scouts from our Day Camp site, each day camp will have a designated pick-up site. Each camp's Directors will make you aware of this location at the orientation meeting. We will post any cancellations or early dismissal from camp on the council website [bsa-selacouncil.org](http://bsa-selacouncil.org) and the Council Facebook page by 7:30am.

If camp is cancelled after 7:30am, parents or Pack Coordinators shall be contacted directly by camp staff.

## Emergency Response Protocol

In the event of an emergency such as an active shooter, police emergency or fire, the safety of our Scouts and volunteers is most important. Each Cub Scout Day Camp will provide specific information to parents at the orientation meeting as to procedures for emergencies in that location.

## Lost Scout

Cub Scout Day Camp operates under the Buddy System like every other Scouting America activity. Scouts must always have a buddy with them including trips to the bathroom, returning to Pack area to retrieve something, during water activities, etc. This is the first step to ensuring that we do not have any “Lost Scouts.” If Scouts are not in their program area and adults do not know where they are, emergency procedures are implemented. These procedures disrupt the normal routine of camp and interrupt everyone’s enjoyment of camp.

In the event of a lost scout, the following Emergency Procedure will be implemented:

- Den Walkers report to the Camp Director that there is a missing Scout including name and description of what the Scout looks like, what they are wearing that day and last known location.
- The Camp Director will contact other Staff members by radio to see if the missing Scout can be located near their program areas.
- If the Scout is still not located, the Camp Director will blow three long horn blasts.
- At this time, each den will proceed to the Flag or other designated area for instructions.
- Den Walkers will take a count of their Scouts and send one representative to the registration area to report that everyone is accounted for.
- Once the count is taken and reported, ensuring that the lost Scout is not with them, individuals are dispersed to look for the Scout.
- If the Scout is not found within 15 minutes, local authorities, the Southeast Louisiana Council Office and the Scouts parents will be contacted.
- Whether or not Scouts will return to the program activity areas before the missing Scout is located is at the discretion of the Camp Directors and Council staff.

## General Registration Process

Check-in & Check-out will differ based on the specific camp. Information on specifics will be given at the pre-camp parent orientation meeting.

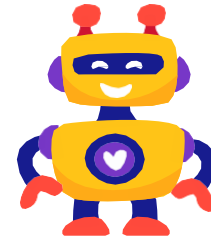
### Check-in (General)

- On the first day of Camp, all remaining Annual Health & Medical forms for the Scouts and adults attending any time during the week must be turned in at registration if not turned in to Director at parent orientation meeting.
- All attendees (Scouts, Adults & Staff) must check in so that the Directors have an accurate count of how many people are on campus each day.
- Den bags/buckets/folders and den flags are retrieved by each den.
- Line up by den around the flagpole or designated “start” area.

### Check-out (General)

- After Closing ceremonies at the flagpole, Scouts should return to their Den flags and gather their belongings.
- Pack adults should assist staff to ensure that each Scout is signed out by a parent or other designated adult

- There should be two Pack adults per pack present until the last Scout in their Pack is picked up by their parent or other adult.
- When all the Scouts have been picked up, the registration check-out sheet needs to be returned to registration.
- If a Scout needs to leave camp early, a parent will need to sign them out at registration or with the Day Camp Director.



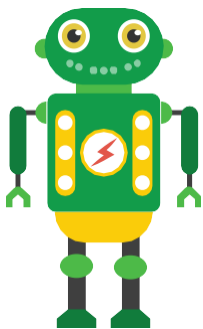
## Day Camp Dens

Day Camp Dens are made up of 8-12 Scouts of the same rank. These dens might not be made up of Scouts entirely from your Pack. Given the number of Scouts that attend, it is necessary to mix Scouts from different Packs. This is a great opportunity for your Scouts to make new friends so please encourage them to include Scouts from other Packs in their games and activities. As you continue in Scouting, you will see these Scouts at other events and continue to build these friendships. Remember a Scout is.... Friendly.... Kind..... Courteous..... Helpful....

## Lost & Found

Each Day Camp will maintain a lost and found. If your Scout loses something at camp, please check with the Directors to see if someone has turned in the item. If you happen to find something at camp, please turn it into the Directors to be placed in the lost and found. All lost and found items that remain after camp will be taken to the council office. If not claimed within a month of the last Day Camp, Council will dispose of the items.

## Dragon Scouts (aka Tot Lot)



Dragon Scouts (Tot Lot) will be offered at the **New Orleans Area Day Camp ONLY**

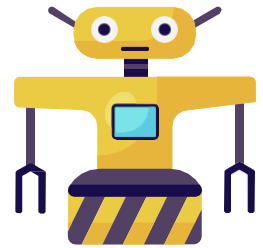
Dragon Scouts (Tot Lot) is only available to Den Walker parents (on the day they are in camp) or Volunteer Staff working Day Camp. It is available for potty trained, non-registered children. The children in Tot Lot will be able to participate in most of the camp activities, but not all. If a child is entering 1<sup>st</sup> grade, we highly recommend that the parents register that child in Cub Scouts so that they may fully participate in Day Camp. If a child is older than 11, we recommend they volunteer to work as staff at Day Camp, we can always use the help!



# Pre-Camp Parent Orientation Meeting New Orleans Area Camp Only

The pre-camp parent orientation meeting is a MANDATORY meeting for parents of attending Scouts for the weeklong Day Camp. At this meeting, you will:

- Receive specific information about your camp including check-in times, registration procedures, what to bring/not to bring, etc.
- Turn in your Annual Health and Medical Forms
- Find out your Scouts' den assignments
- Pick up your Scout's Day Camp t-shirt
- Be able to ask any last-minute questions of your Day Camp Directors in advance of camp.



There will not be a parent orientation meeting for Day Camp in a Day.

## Camp Activities

### Activity Sessions

Camp staff has put in an immense amount of time and effort to provide to you and your Scouts an enjoyable experience and worthy activities.

Activity sessions are geared toward different rank/skill levels and interests of Cub Scouts.

Cubs will be offered opportunities to work on:

- Rank Electives
- Participate in activities only offered at a Council level (i.e. Range & Target Sports)
- Learn new skills
- Enjoy new experiences through Special Programs and Presenters at camp.
- Have Lots of Fun!

### Den Skits and Chants

During downtime or travel time (movement between activities), try to work on a chant specific to your den name (i.e. White Bears, Yellow Webelos, or Blue Wolves) with all the scouts in your Day Camp dens.

If your Den would like to perform a skit at one of our closing programs, they need to speak with the Camp Director and get approval for the skit they wish to perform.

Remember, all skits must be in keeping with the Scouting America guidelines and may not include examples of violence, bullying, discrimination, etc.

And last, but not least, remember to have a fun week at camp!

# Contact Information

Should you have any questions before the start of camp, please feel free to contact the Directors for your specific Cub Scout Day Camp. We will be happy to answer your questions. All issues with online registration should be directed to the SELA Council offices.

## Bayou Area

Tia Lopez                                      [bayoucubdaycamp@gmail.com](mailto:bayoucubdaycamp@gmail.com)                                      985-414-3459

## Slidell Area

## New Orleans Area

Althea Vallotton                                      Kayaker73@aol.com                                      504-329-5099

Charlene Saravia                                      ditsymama@gmail.com                                      504-723-3690

## Council Advisor

Maria Foret                                      [Maria.foret@scouting.org](mailto:Maria.foret@scouting.org)                                      985-855-8268

**Southeast Louisiana Council Office**                                      504-889-0388

# Conclusion

It is the goal of our Staff and Volunteers to ensure that your Scouts have fun during Day Camp. Our volunteers have put countless hours into the planning and execution of the camp. It is our goal that the joy and excitement with Cub Scout Day Camp propel them towards an exciting adventure in Scouting for many years to come.

If you have any suggestions for improvements or wish to help with the planning of next year's camp, please contact the Camp Director. A participant survey will be available at camp. Please take a few minutes and fill it out so that we have feedback to help us make improvements to next year's camp program.

Thank you again for your participation in our council Cub Scout Day Camps.

**[Register today at bsa-selacouncil.org](http://bsa-selacouncil.org)**